

In-Line 10/100M Ethernet Tap PCI CARD

CTAP-10/100M

User Manual

株式会社 サイバー・ソリューションズ
Cyber Solutions Inc.

Contents

Contents of the package	3
Getting Started	4
The Components	5
Installation	6
Hardware specification	8
Troubleshooting	9
Warranty	

Contents of the package

The package contains-

An In-Line 10/100M Ethernet Tap card (Figure 1)

A Connector (Figure 2)

A User Manual and Warranty(Figure 3)

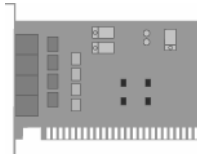


Figure 1. In-Line 10/100M Ethernet Tap card

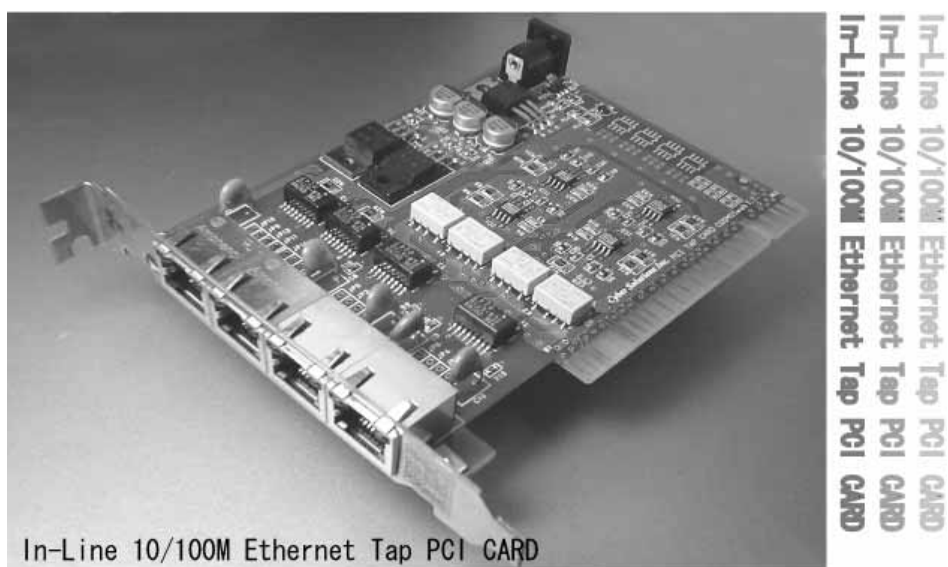


Figure 2. A Connector



Figure 3. A User Manual and Warranty

Getting Started



「In-Line 10/100M Ethernet Tap CARD」 is a PCI half length type card. It allows monitoring of communication data without affecting the communications. It can be installed in any computer by simply inserting the card in an empty PCI slot.

Typical usage scenarios:

In Network Intrusion Detection devices

In Network Traffic Measurement and Analysis devices

Features :

UTP type, half-duplex and full-duplex support.

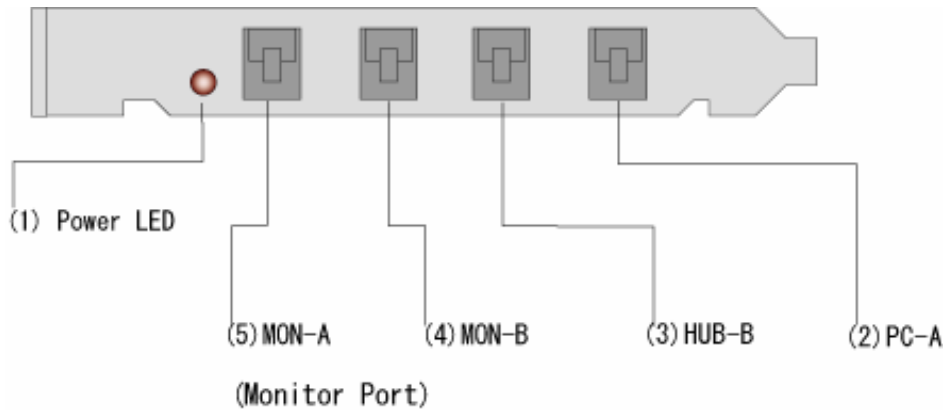
Can be installed inside a computer with a PCI slot

A power monitor IC ensures that data communication continues uninterrupted along the direct line when there is a drop in voltage to the card.

Fail-safe measures to ensure uninterrupted communication even when the computer hosting the splitter card or the card itself is powered off.

The Components

View of the back panel



Part name	Description
(1) Power LED	It lights up when the power supply is on.
(2) PC-A	socket to connect to computer or router.
(3) HUB-B	socket to connect to HUB.
(4) MON-B (Monitor Port)	socket to connect with monitor computer. The traffic from HUB-B(3) to PC-A(2) is directed through this socket.
(5) MON-A (Monitor Port)	socket to connect with monitor computer machine. The traffic from PC-A(2) to HUB-B(3) is directed through this socket..

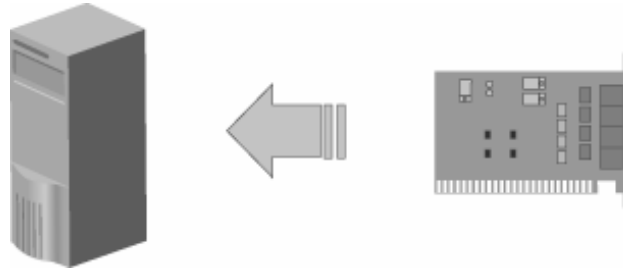
The RJ45 LEDs light up to indicate Network activity.

Installation

1) Fixing the CARD

Power off the computer and then pull out the power-supply plug.

Insert the In-Line 10/100M Ethernet Tap PCI CARD into the PCI slot of the computer.



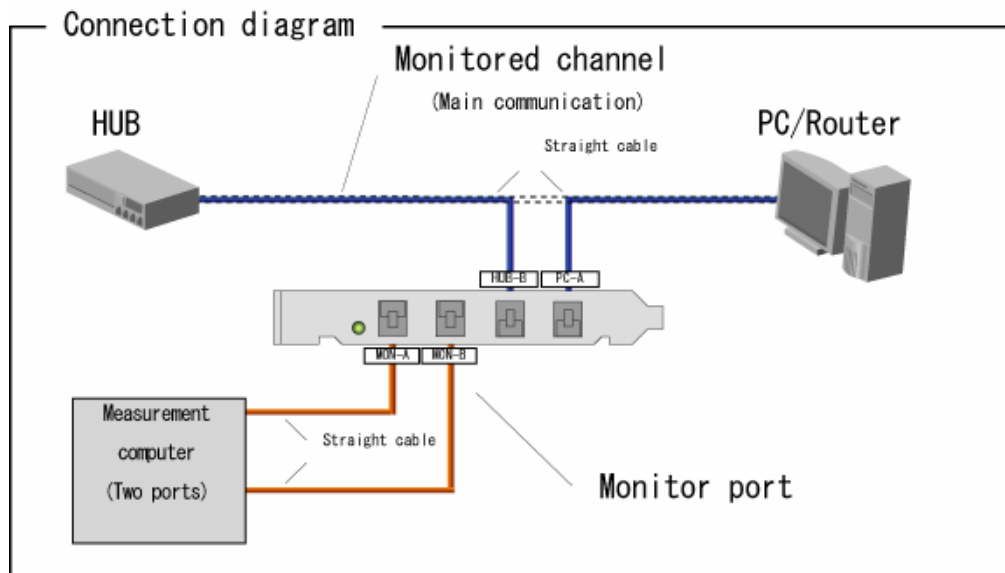
2) Connection

Connect the CARD as shown in connection diagram. (*1)

Connect to the computer or router from the 「PC-A」 port.

Connect to the HUB from 「HUB-B」 port.

Connect 「MON-A」 to Measurement computer. (*2)

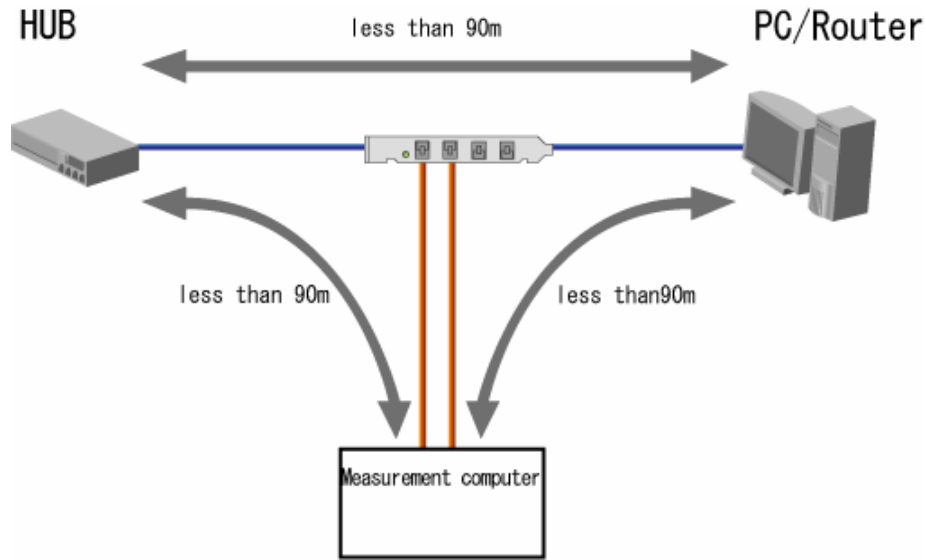


(*1) Use straight cable for connections.

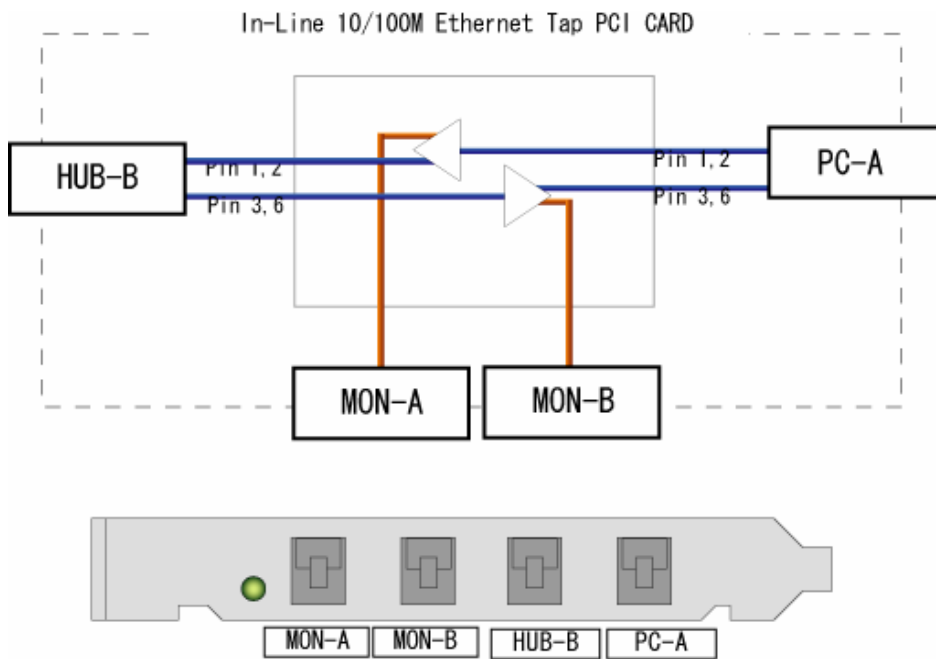
Please use UTP cable. (Cable is not provided with this package).

(*2) Please use Measurement computer that supports two RJ-45 Ethernet network ports

Note. Please ensure that the length of the cables to/from the CARD is less than 90m



Block diagram



Hardware specification

Operating Environment	Temperature:0-40 Humidity: 10-90 % (No condensation)
External Dimensions	Approximately 122(W)×89(H)×20(D) (The protrusion is not included)
Electric Current consumption	380mA
Weight	Approximately 82g

Troubleshooting

The link connected to the monitor port of the card does not come up or is instable
Generally the network interface auto configures itself to half, or full duplex. In case the link does not come up, You may need to manually configure the interface corresponding to the computer interface to the desired communication speed, and other settings.

Warranty

In case of defects e.g. due to faulty manufacturing, detected and reported within a year from the date of purchase, the defect will be fixed or the product will be replaced free of charge. Please take the product along with this warranty to the retailer from whom you purchased the product. If you send it by post, please do so at your own responsibility.

Even during the warranty period, the full repair costs will be borne by you in the following cases

1. Warranty is not presented.
2. The retailer's name and the date of purchase is not noted in the warranty or is tampered with.
3. CARD failure due to problem with other devices.
4. Damages from natural disaster, fire, or abnormal voltage.
5. Improper use, failure due to fixing, remodeling or careless handling

[NOTICE]

Please keep this warranty with care. It will not be reissued.

This warranty is valid in Japan only.

Data loss due to the usage of this package or the failure of the package and any other case is not covered by this warranty.